

## Critical Environment Monitoring Specialists

Remove the obstacles, disruptions, distractions and concerns that impede a smoother running business. With the Winland Critical Environment Monitoring solution, you'll experience newfound freedom – and ability to focus on the very things that improve results and drive value.

The solution provides complete real-time visibility to temperature, water, gas, humidity and other physical irregularities in critical condition environments. Curb inventory and labor costs. Ensure compliance with storage regulations. Safeguard your business reputation and market position.



# Critical Environmental Monitoring Solution

## INSIGHT

Newfound freedom comes complete with plenty of options – your options. You can design response plans, receive exception alerts, generate and distribute reports virtually any way you want them. You can monitor critical environment conditions two ways – on-line via any computer or smart device for real-time data access and/or integrate the solution with a trusted security system provider for 24x7 monitoring.



### The Right Response

#### INSIGHT offers:

- The ability to log an acknowledgment, or reading of a condition.
- If needed, **INSIGHT** can present an action step to the respondent.
- The ability to develop customized and step-by-step response plans for any type of incident, type of product - and more- with a few clicks of the system.
- Option for user to leave a comment which can be mandatory.
- The system will automatically generate an incident report that is distributed immediately after the response plan is completed.



### Exception Alerts, Six Ways

When a sensor falls outside of its threshold, notifications can be sent to recipients in any of the ways users configure their notification preferences.

- Visual System Notification within the web-based application
- Email Alerts
- Text Messaging
- On-premises Audible and/or Visual Alarm
- Notification of Alert relayed to security provider monitoring station.
- Integrate notification of Alert into third-party or proprietary system.

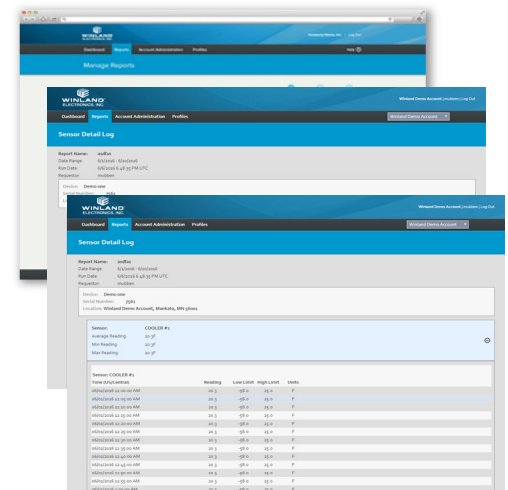
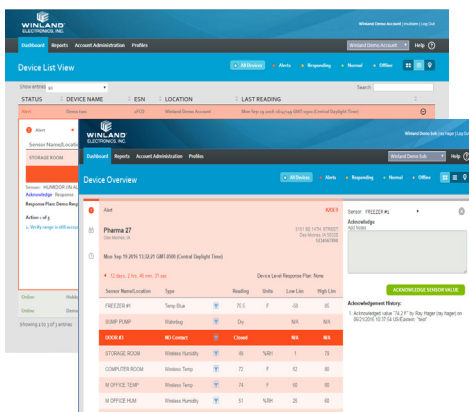


### Reporting and Analytics

Robust reporting capabilities with configurable and custom reports that can be accessed on-demand or distributed to individuals and groups at specified intervals with scheduled reporting.

#### Six of the most common system generated reports include:

- Sensor Detail Log Report
- Sensor Summary Log Report
- Sensor Acknowledgment Report
- Alert by Location Report
- Alert by Device Report
- Alert Response Summary



# Safe and simple under the hood.



## Flexible Enterprise Management

Its configurable enterprise structure simplifies remote management of devices in multiple locations or within different organizational groups.



## Simplified Integration

Integrating alert relays into any wired or wireless security system is easy and enables 24x7 monitoring.

Standard APIs\* (based on secure web services) facilitate data extraction from **INSIGHT** and integration with other applications.

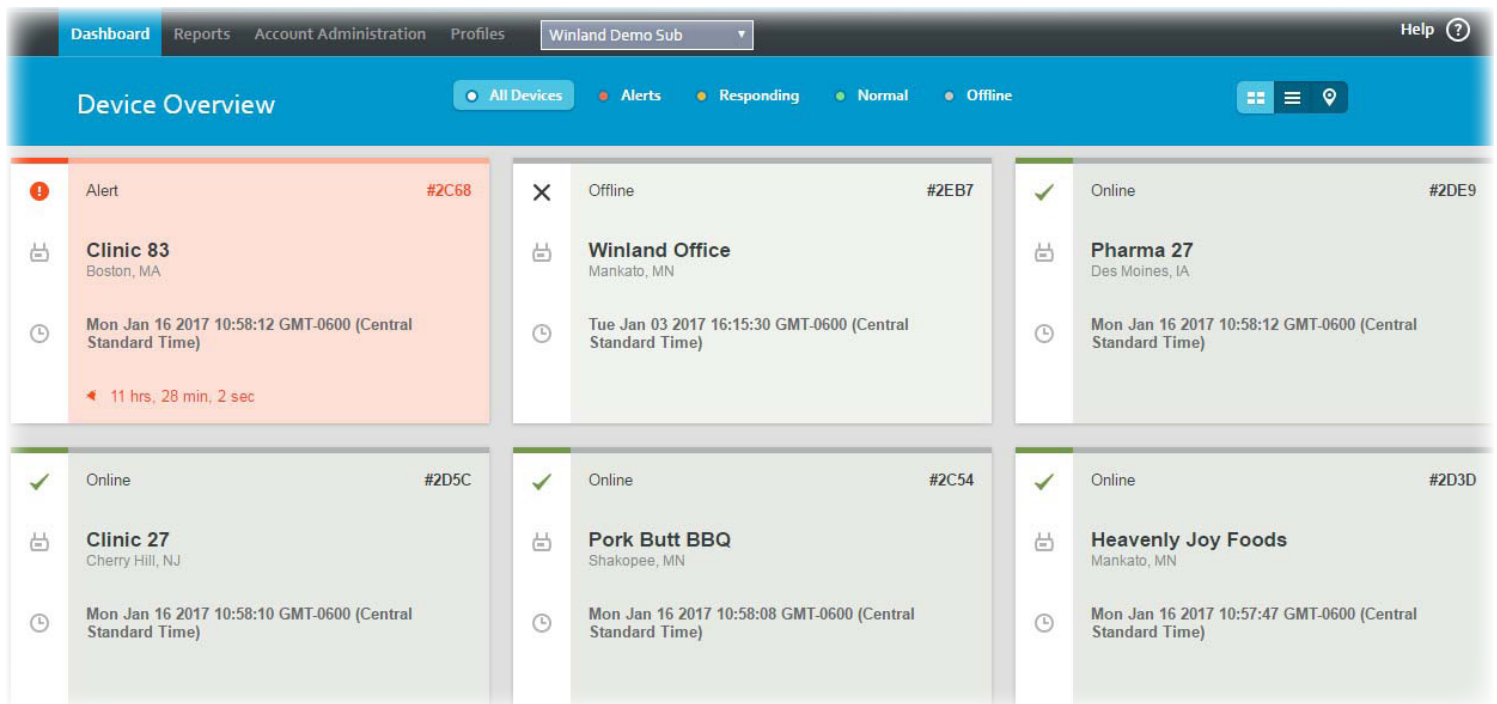
\* Available Upon Request



## Robust System Security

The Winland solution protects stored and transmitted data's security, integrity and privacy.

It's a cloud-based platform with tiered infrastructure, application, encrypted proprietary communication protocol, and SSL data traffic.



# Sensor Placement and Installation

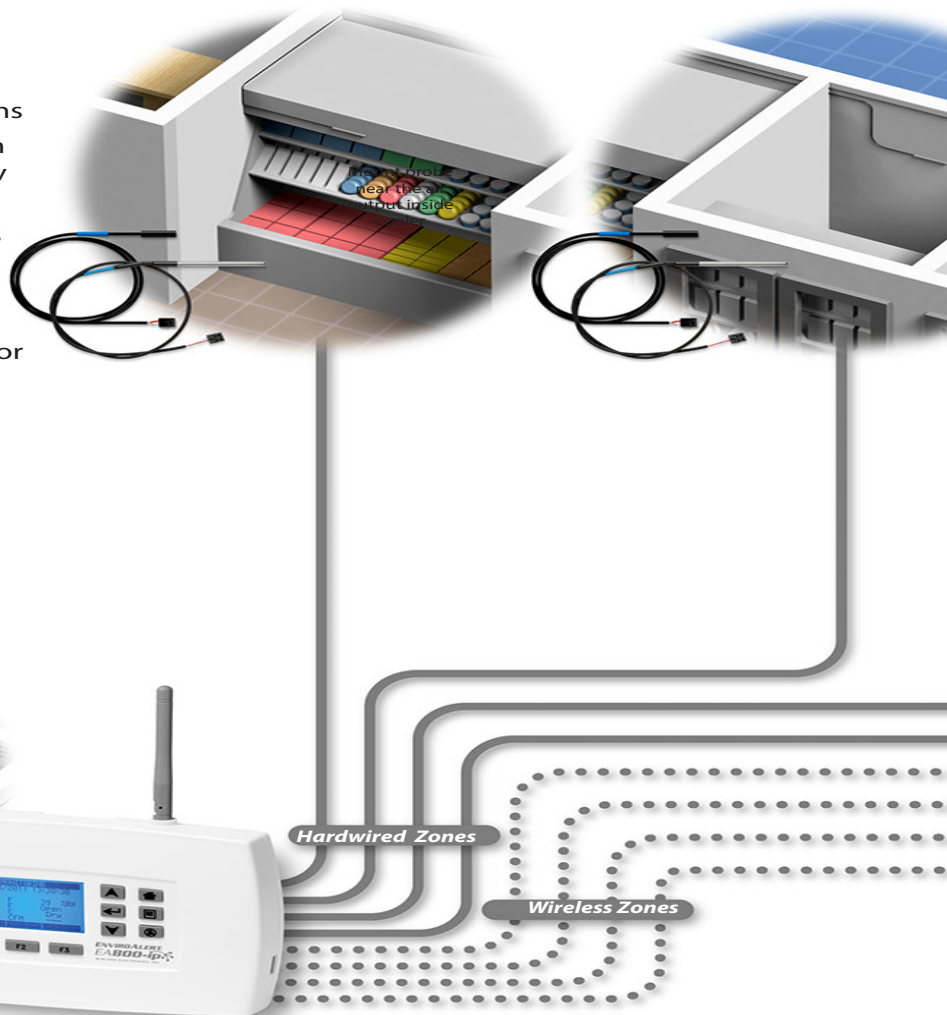
This convenience store example shows many applications that could be monitored individually. The **EA800-ip** was selected to monitor the entire store using one console with hardwired and wireless sensors. The **EA800-ip** console provides electronic data logging reducing risk of employee error.

## Key points:

- Connect up to 12 sensors (up to 8 wireless, up to 4 hardwired) via the **EA800-ip**
- The TEMP-L-S stainless steel sensor is used in most cooler/freezer applications
- The Temp-L-W waterproof sensor can be immersed, i.e., lobster tanks, heavily washed areas, etc.
- Wireless sensor transmission range is 45' to 100' indoor (results may vary)
- Wireless sensors cannot be placed in coolers/freezers (use a hardwired sensor connected to an external EA-WMFS sensor, see Zone 8 example)

**ZONE 1**  
Hardwired Input  
Deli Cooler

**ZONE 2**  
Hardwired Input  
Dairy Cooler



## Console to Panel Connection

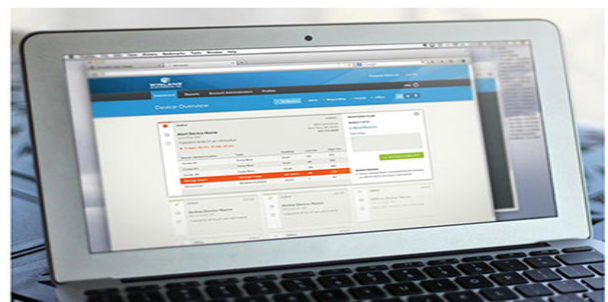
Eight of the twelve available sensors can be connected via output relay to an alarm panel.

All EnviroAlert consoles have an auxiliary output relay to accommodate remote buzzers and strobes (or as an optional single output to the alarm panel).

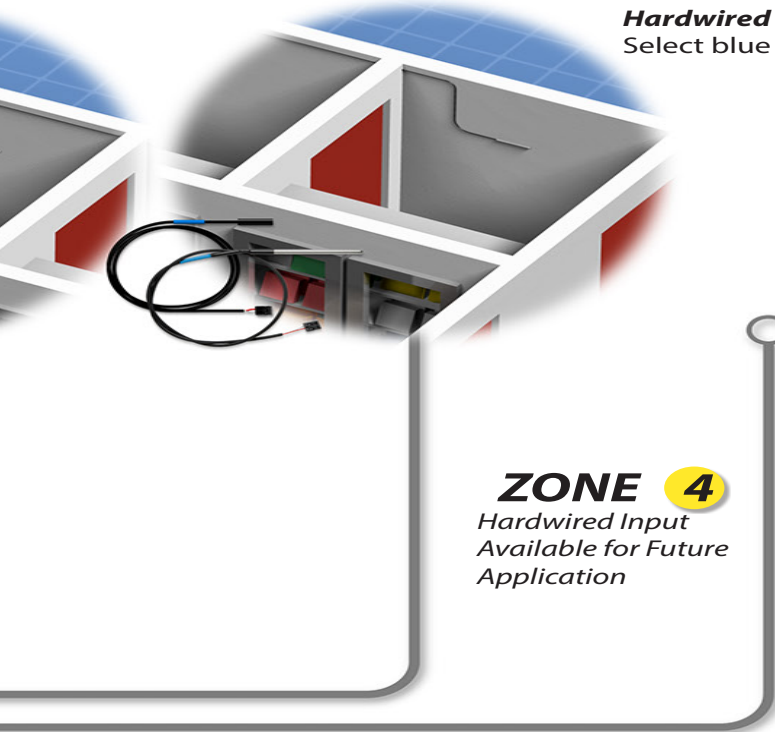
Alarm Panel

## Data Logging

- Available for 3 years, **INSIGHT\*** cloud-based data can be viewed on-line, via real-time reporting, scheduled email .pdf reports or downloaded in .csv format.  
**\*Requires a fee-based subscription.**
- Locally, 10,000 data points per sensor are transferable to a USB memory stick.



**ZONE 3**  
Hardwired Input  
Pizza Freezer



**Cooler/Freezer Monitoring**

Coolers/freezers can be monitored using hardwire sensors or wireless sensors. Wireless monitoring requires the EA-WMFS with a sensor.

**Hardwired Installation:**

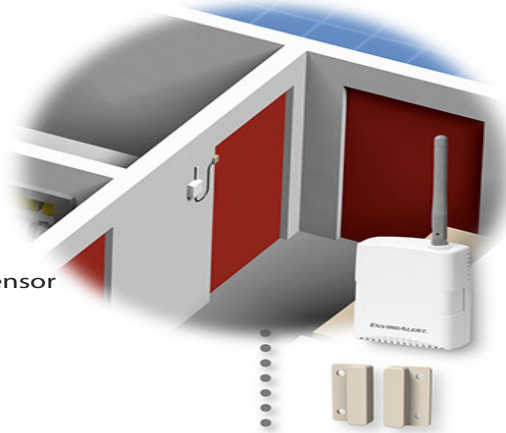
Select blue sensor (TEMP-L-S or TEMP-L-W)

**ZONE 5**

Wireless Input  
Walk In Freezer  
Door Contact

**Wireless Installation:**

Select EA-WMFS +  
N.O./N.C. dry contact sensor



**ZONE 4**

Hardwired Input  
Available for Future  
Application

**Wireless Connections**

Applications which use an EA-WMFS wireless sensor require the connection of a sensor for the specific condition to be monitored.

**Wireless Installation:**

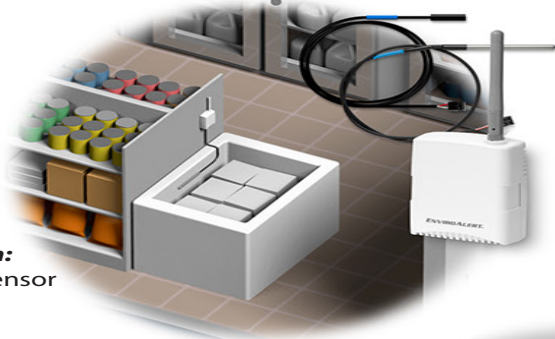
Select EA-WMFS and appropriate sensor

**ZONE 8**

Wireless Input  
Chest Freezer

**Wireless Installation:**

Select EA-WMFS + sensor

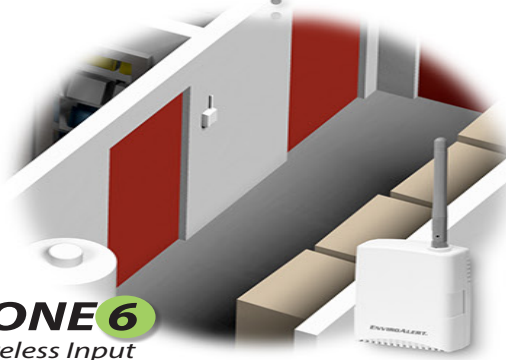


**ZONE 6**

Wireless Input  
Dry Storage Humidity

**Wireless Installation:**

Select EA-WHS



**W-S-S Supervised Water Sensor**

Stable surface mount design. Supervised sensors will alarm if wire is severed as well as when water is detected

**ZONES 9-12**

Additional wireless sensors available  
for future application

**ZONE 7**

Wireless Input  
Water Presence  
Near Water Heater

**Wireless Installation:**

Select EA-WMFS + W-S-S



# Hardware

## EnviroAlert® EA800-ip

12 protection zones (4 wired and 8 wireless) with 9 form C relay outputs.



## Specifications

Sensor Alarm Outputs	8 – Form C Relays (Configurable) – Max 30 VDC @ 1 Amp resistive
Auxiliary Alarm Output	1 – Form C Relay (Non-Configurable) – Max 30 VDC @ 1 Amp resistive
Data Collection Frequency	30 seconds, 1, 5, 15, 30, 60, or 120 minutes (default 5 minutes)
Power Requirements	11 to 26 VDC @ ≤500mA
Piezo Buzzer	88 dBA (min) @10 cm Continuous (enable/disable for local audio alarm)
Operating Temperature Range	32° to 122°F (0° to 50°C) Indoor Use Only
Console Dimensions	8.13 x 5.52 x 1.93" (20.6 x 14.0 x 4.9 cm)
Wireless Frequency	2.405 GHz – 2.480 GHz, 16 channels
Wireless Sensor Transmission Distance	45' to 100' indoor (results may vary)
Warranty	1 year

## Wireless Sensors

Power Requirements: Battery Power: 2 – AA Alkaline Batteries or Line Power: +12VDC @ ≤100 mA

Wireless Temperature Range Sensor	<b>EA-WTS</b>	+32 to +122° F (0 to +50° C)
Wireless Humidity Sensor	<b>EA-WHS</b>	5% to 95% Relative Humidity
Wireless Multifunction	<b>EA-WMFS</b>	Utilize any of the standard hardwired sensors (excluding the HAIII+) in conjunction with the Wireless Sensor Adapter



## Wired Sensors and Accessories

Ultra Low Temperature Thermistor – Stainless Steel	<b>TEMP-UL-S</b>	-148 to +32° F (-100 to 0° C) or -112 to +32° F (-80 to 0° C) (with EA-WMFS Wireless)
High Temperature Thermistor – Stainless Steel	<b>TEMP-H-S</b>	+32 to +302° F (0 to +150° C)
Low Temperature Thermistor – Stainless Steel	<b>TEMP-L-S</b>	-58 to +158° F (-50 to +70° C)
Low Temperature Thermistor – Waterproof	<b>TEMP-L-W</b>	-58 to +158° F (-50 to +70° C)
High Temperature Thermistor – Waterproof	<b>TEMP-H-W</b>	+32 to +221° F (0 to +105° C)
WaterBug® – Supervised Surface Sensor	<b>W-S-S</b>	Water Presence Detection
WaterBug® – Supervised Under Carpet Sensor	<b>W-UC-S</b>	Water Presence Detection (for use under carpet)
Humid-Alert® - Humidity Sensor	<b>HA-III+</b>	Humidity Sensing Range: 5-95% RH ±. 5% @ 77° F
6 oz Bottle of Glycerin and Grommet Cap	<b>TEMP-G-B</b>	
Temp Probe Flat Cable Splice Kit – 5'(1.53 m)	<b>TEMP-S-K</b>	

Monitor other critical environments with 4-20mA Sensors (Gas, Light, Extreme Temps, pH, Pressure, etc.)

Certifications



For additional assistance contact tech support at 800.635.4269 Ext. 1 or email [techsupport@winland.com](mailto:techsupport@winland.com)





## INDUSTRIES

Our revolutionary software will allow you to initiate the fastest-possible response to any arising equipment issues, protect your inventory investment, maintain compliance with governmental regulations, avoid fines and costly lawsuits, and safeguard your reputation.

### Healthcare



Winland **INSIGHT\*** is an automated, cloud-based critical-condition monitoring service available within the healthcare industry.

It provides early detection of environmental threats to your perishable assets, ensuring that healthcare standards are continuously upheld.

### Pharmaceutical



There is no compromising when it comes to pharmaceutical standards. Safety is of paramount importance-to your clients and to your reputation.

Protect your perishable assets with **INSIGHT** and position yourself as an industry leader in regulatory compliance.

### Foodservice



Protect your perishable assets, and your reputation with Winland **INSIGHT**. Winland technology is essential to any comprehensive food-safety program.

*\*Fee-based subscription required*

### Research Facilities



Winland technology is essential to your research facility, providing early detection of threats to your fragile assets, ensuring that standards are continuously upheld. **INSIGHT** is undaunted by the prospect of monitoring your delicate assets with its automated, cloud-based, critical-condition monitoring service.

### Agriculture



With the majority of American farmland being industrial agriculture, and the growth of greenhouse facilities, Winland's **INSIGHT** is essential for your maximum yield.

### Manufacturing



**INSIGHT** allows you to initiate the fastest-possible resolution to any arising equipment issues, protect you inventory investment, and maintain compliance with governmental regulations.