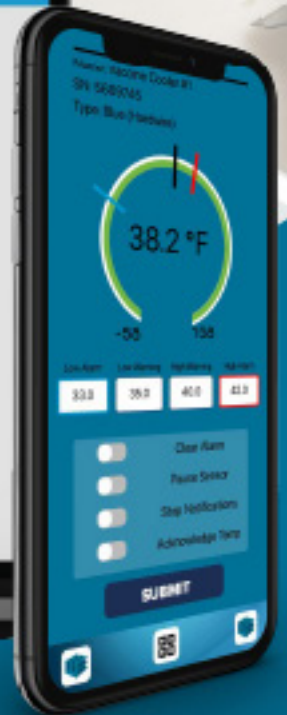
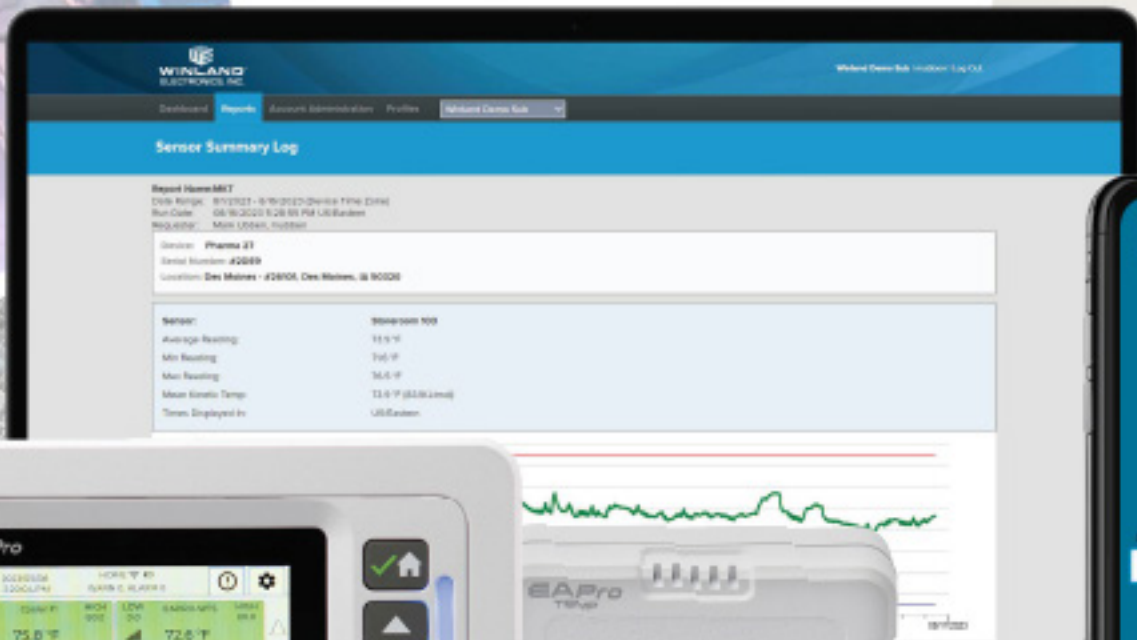




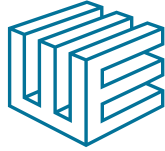
# WINLAND™ ELECTRONICS, INC.



Environmental Monitoring Solutions

Winland.com

D-008-0102 Rev A



# WINLAND™ ELECTRONICS, INC.

An industry leader in critical-condition monitoring devices. Products including EnviroAlert Professional®, EnviroAlert®, WaterBug®, Power-Out Alert™ and Temp°Alert™ are designed to monitor critical conditions for industries including Agriculture, Construction, Food Service and Storage, Healthcare, Manufacturing, Real Estate, Technology, Veterinary and Warehousing.



## SPECIALTIES

Environmental Monitoring Solutions using Winland's Critical-Condition Monitoring Devices. Winland™ products are compatible with most hardwire or wireless alarm system and are available through distributors worldwide.

## WHERE TO BUY

Visit <https://winland.com/where-to-buy/>



**WINLAND™**  
ELECTRONICS, INC.

# Industries

**Agriculture**

**Construction**

**Food Service and Storage**

**Healthcare**

**Manufacturing**

**Real Estate**

**Technology**

**Veterinary**

**Warehousing**



**Winland.com**



# WINLAND™ INSIGHT

Winland™ **INSIGHT** provides complete real-time visibility of temperature, water, humidity, and other third-party sensors (CO<sub>2</sub>, differential pressure, fuel detection, and more), in critical-condition environments. The system detailed logging and auditing, along with optional customized response protocols allows for nearly instant notifications by e-mail, text, or push notifications through our Winland™ **INSIGHT** app, as well as the comfort of knowing irregularities are being documented and steps followed through customized response protocols.





## Reporting

The Winland™ **INSIGHT** platform offers robust reporting capabilities with configurable and custom reports that can be accessed on-demand or scheduled. Scheduled reports can be distributed to an individual or multiple users at a specified interval with an array of sensors in PDF or CVS options based on the type of report.

## Real Time Dashboard

Monitor critical-environment conditions online by logging into your account via any computer or smart device for access to real-time data and detailed system information or download the Winland App onto your iPhone or Android device.



## Data Logs / Retention

Winland™ **INSIGHT** allows access to three years of data retention with customized reporting capabilities accessed on-demand or distributed to individuals and groups at specified intervals with scheduled reporting.

## Response Profiles

Develop a customized, step-by-step response plan or plans for all types of incidents. Setting up standardized protocols for incidents based on location, length of incident, type of product being stored, and other parameters can be done with a few clicks of Winland™ **INSIGHT**.



## Notifications

When a sensor falls outside of its threshold, notifications can be sent to pre-defined recipients in any of the following ways that a user configures their notification preferences:

- Text message and/or push notification (with Winland™ **INSIGHT** App)
- Visual system notification within Winland™ **INSIGHT** (winlandinsight.com) application e-mail
- Local audible and/or visual alarm from the EnviroAlert Professional® device on-premise
- Notification of alert relayed to security provider monitoring station when system is integrated into a security system

## Remote Programming

Flexible enterprise management allows you to configure and simplify remote management of devices in multiple locations or within different organizational groups.



# EnviroAlert Professional® Gateway

The EnviroAlert Professional® Gateway (“EAPro® Gateway”), an on-premise monitoring device, is part of the Winland™ Critical-Environment Monitoring Solution. When integrated into a security system, or used as a stand-alone solution, the EAPro® Gateway provides real-time monitoring and alerting of up to 34 zones impacting environment-dependent assets such as temperature, humidity, water, loss of power and more. As part of the cloud-based solution, the EAPro® Gateway and all associated wired and wireless sensors can be managed remotely from Winland™ **INSIGHT**. The EAPro® Gateway requires a fee-based subscription to Winland™ **INSIGHT** if you want to receive email, text message, and/or phone app alerts, as well as reporting and the ability to configure online.



## Logging Collection Frequency

- Touch screen interface
- Monitor up to 34 sensors (up to 30 wireless, up to 4 hardwired)
- Flexible application options through the use of hardwired and wireless sensors
- Remote visibility and device management through web-based application called Winland™ **INSIGHT**
- Monitoring capabilities include: temperature, humidity, water and third party sensors such as gas and pressure
- Device accommodates 4-20mA and 0-5V sensors for additional application options
- 5 fully programmable relays

## Connectivity

- Wi-Fi
- Ethernet
- PoE
- Monitor multiple sites from any location (with the purchase of additional EAPro-GTWY devices and sensors)
- Cloud-based Winland™ **INSIGHT** access requires a fee-based subscription



## Remote Access To

- Programming
- EAPro® Gateway firmware updates
- Real-time data viewing
- Sensor, alarm and event data logs for audit trail
- Scheduled reporting
- Sensors for temperature, humidity, water and third party sensors such as gas and pressure
- Alarm notification via text message, email, push notification through app, dry contact relay and local sounder

## Data Logging

- Sensor data
- Event history
- Alarm history

## Product Certifications

- CE
- MET

# Wireless Sensors

- Wireless sensors work with the EAPro-GTWY device
- Indoor Transmission Distance 500' (152.4m) - (results may vary)
- Up to 1-year battery life (low battery alarm notification)
- Can be powered by Winland's 12V DC Power Adapter Kit
- Not for use inside coolers/freezers; instead use a hardwired sensor with the EAPro-WMFT



## **EAPro-WMFT**

Wireless Multi-Function Transmitter (Sensor sold separately).



## **EAPro-WTS**

Wireless Temperature Sensor monitors ambient room temperature. 32 to 122 °F (0 to 50 °C).



## **EAPro-WHS**

Wireless Humidity Sensor monitors ambient room relative humidity. 5 to 95% RH.



# EnviroAlert®



**EA200**

EnviroAlert® solutions simultaneously monitor temperature, humidity, and/or water presence in critical environments. Designed for customization, they work for any company or job site. You'll receive alarm notifications through your alarm panel of arising issues and enjoy peace of mind, knowing your valuable assets are safe from destruction.



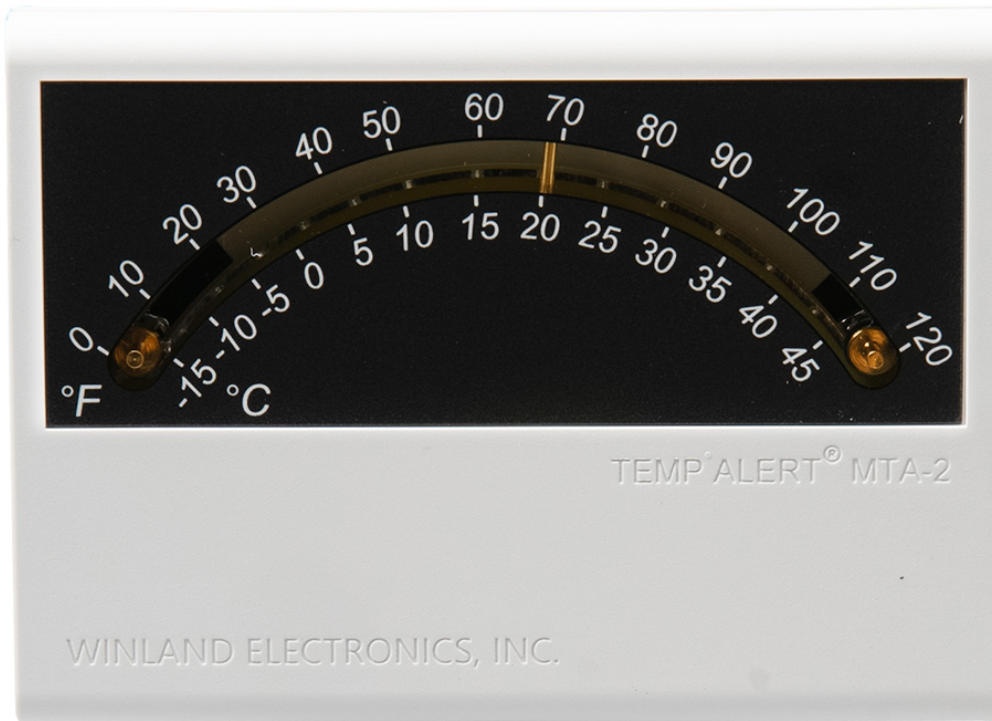
**EA400**

# Temp°Alert®

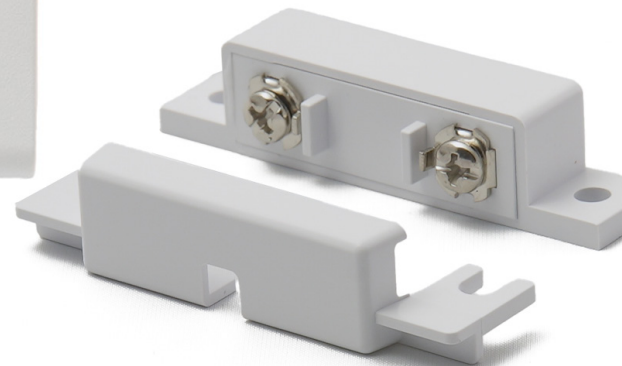
Where climate control is essential — in computer rooms, residential/vacation homes, greenhouses, animal/livestock buildings or any unattended building — Temp°Alert® models protect residential and commercial environments via security systems. Wire Temp°Alert® units in parallel with security systems to create simple, wide-area coverage.

## All Temp°Alert® products offer:

- Reliable and economical temperature protection for residential or commercial facilities
- Quick, easy installation
- Power-free operation



MTA-2



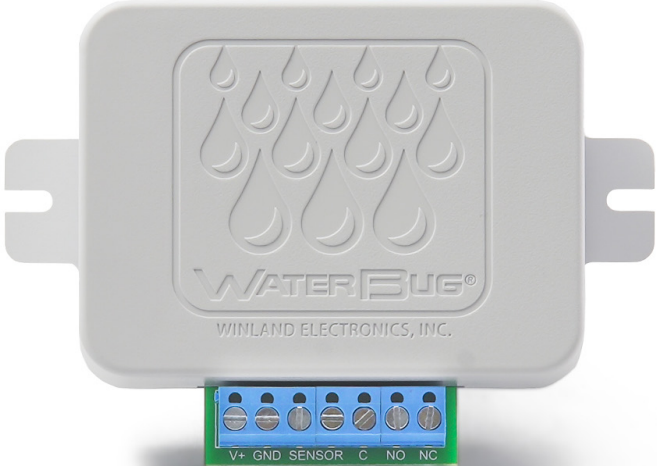
TA-40

# WaterBug®



**WB350**

Water leaks can quickly cause significant damage in residential, commercial, and industrial environments. Implementation of a dependable water detection system is critical in safeguarding physical locations and protecting valuable assets. The WaterBug® product line provides reliable protection and enables real-time notification of water presence, enabling immediate and actionable resolution. The WaterBug® product line is available in two different models for dependable water detection in a variety of applications.



**WB200**

# Power-Out Alert™



The PS-110, Winland's Power-Out Alert™ simply plugs into any 120V AC outlet. 15' signal output cable connects to any alarm panel, etc. When power is interrupted for 3-8 minutes, a dry contact closes producing a signal output. This time delay eliminates nuisance alarms from momentary outages. May be used as a wired accessory with the EAPro-WMFT. Applications include homes, computer rooms, supermarkets or anywhere power monitoring is essential.



# Environmental Monitoring Solutions Application Data

## STEP ONE.

### Evaluate Job Sites for Environmental Monitoring Application

- Agriculture
- Construction
- Manufacturing
- Technology
- Warehousing
- Food Services/Storage
- Healthcare
- Real Estate
- Veterinary
- Other

## STEP TWO.

### Determine Customer Requirements

Integrate with Existing Alarm System: \_\_\_Yes \_\_\_No

Local Alarm Required: \_\_\_Yes \_\_\_No

Monitor via Cloud: \_\_\_Yes \_\_\_No

**Coolers:** Cooler Count: \_\_\_\_\_

\_\_\_Reach In \_\_\_Enclosed Case \_\_\_Walk-In Other: \_\_\_\_\_

Cooler Temp Range: \_\_\_\_\_

Cooler Contents: \_\_\_\_\_

Defrost Cycle Length: \_\_\_\_\_

**Humidity:** Number of Locations: \_\_\_\_\_

High Setting: \_\_\_\_\_ Low Setting: \_\_\_\_\_

**Water Sensing:** Number of Locations: \_\_\_\_\_

Surface Sensor: \_\_\_\_\_ Rope Sensor: \_\_\_\_\_

# STEP THREE.

## Select Product Quantity

EA200 Device (on-board temperature, plus one hardwired sensor input)

EA400 Device (4 hardwire sensor inputs)

EAPro-GTWY Device (4 hardwire sensors, up to 30 wireless sensors/transmitters)

TEMP-L-S (Temperature Range: -58 to +158 °F (-50 to +70 °C))

Calibration Certificate Required:  Yes  No

TEMP-L-W (Temperature Range: -58 to +158 °F (-50 to +70 °C))

Calibration Certificate Required:  Yes  No

TEMP-H-S (Temperature Range: 32 to 302 °F (0 to 150 °C))

TEMP-H-W (Temperature Range: 32 to 221 °F (0 to 105 °C))

TEMP-UL-S (Temperature Range: -148 to +32 °F (-100 to 0 °C))

Calibration Certificate Required:  Yes  No

EAPro-ULS (Temperature Range: -148 to +257 °F (-100 to +125°C))

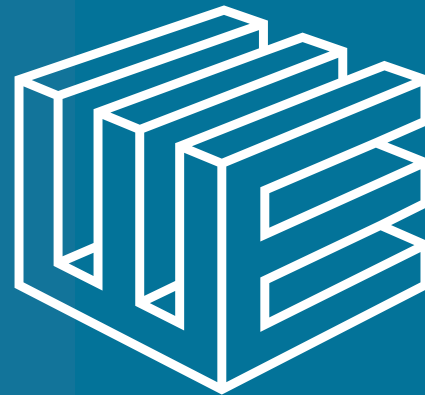
TEMP-G-B (6 oz Bottle of Glycerin and Grommet Cap)

TEMP-B-T (40ml Glass Tube and Grommet Cap)

TEMP-P-H (Temp Sensor Probe Housing – for use with TEMP-L-W or TEMP-H-W)

HA-4 Humidity Sensor (hardwired)

Calibration Certificate Required:  Yes  No



EAPro-WTS (Wireless Temp Sensor: Temperature Range: 32 to 122 °F (0 to 50 °C))

Calibration Certificate Required:  Yes  No

EAPro-WHS (Wireless Humidity Sensor: 5 to 95% Relative Humidity)

Calibration Certificate Required:  Yes  No

EAPro-WMFT (Wireless Multi-Function Transmitter – sensor sold separately)

W-S-S (WaterBug® Water Surface Sensor, Supervised)

WBROPE-KIT (WaterBug Rope Kit)

WBROPE-EXT (WaterBug Rope Extension)

PS-110 (Power-Out Alert™, Loss of Power Monitor)

12V DC-Kit (12V DC Power Adapter Kit)

EAPro-GTWY-BAT (Replacement Battery Kit for EAPro-GTWY)

# Product Compatibility Guide



| Description/Model Name  | EA Pro-GTWY | EA Pro-WMFT | EA200-12 | EA200-24 | EA400-12 | EA400-24 |
|---|-------------|-------------|----------|----------|----------|----------|
| Stainless Steel Temp Sensor (Red)<br>TEMP-H-S<br>Range: 32 to 302 °F (0 to 150 °C)                              | ✓           | ✓           | ✓        | ✓        | ✓        | ✓        |
| Stainless Steel Temp Sensor (Blue)<br>TEMP-L-S<br>Range: -58 to +158 °F (-50 to +70 °C)                         | ✓           | ✓           | ✓        | ✓        | ✓        | ✓        |
| Waterproof High Temp Sensor (Red)<br>TEMP-H-W<br>Range: 32 to 221 °F (0 to 105 °C)                              | ✓           | ✓           | ✓        | ✓        | ✓        | ✓        |
| Waterproof Low Temp Sensor (Blue)<br>TEMP-L-W<br>Range: -58 to +158 °F (-50 to +70 °C)                          | ✓           | ✓           | ✓        | ✓        | ✓        | ✓        |
| Ultra Low Temp Sensor (White)<br>TEMP-UL-S<br>Range: -148 to +32 °F (-100 to 0 °C)                              | ✓           | ✓           |          |          |          |          |
| EAPro Ultra Low Temp Sensor (RTD-PT 1000)<br>EAPro-ULS<br>Range: -148 to +257 °F (-100 to +125 °C)              | ✓           | ✓           |          |          |          |          |
| Temperature Probe Housing<br>TEMP-P-H<br>(for use with TEMP-H-W & TEMP-L-W)                                     | ✓           | ✓           | ✓        | ✓        | ✓        | ✓        |
| Bottle of Glycerin<br>TEMP-G-B  | ✓           | ✓           | ✓        | ✓        | ✓        | ✓        |
| Temp Probe Buffer Kit<br>TEMP-B-T   | ✓           | ✓           | ✓        | ✓        | ✓        | ✓        |
| Temp Probe Flat Cable Splice Kit<br>TEMP-S-K  | ✓           | ✓           | ✓        | ✓        | ✓        | ✓        |
| EAPro Wireless Humidity Sensor<br>EAPro-WHS<br>Range: 5 to 95% RH   | ✓           |             |          |          |          |          |
| EAPro Wireless Temp Sensor<br>EAPro-WTS<br>Range: 32 to 122 °F (0 to 50°C)                                      | ✓           |             |          |          |          |          |
| Wireless Multi-Function Transmitter<br>EAPro-WMFT<br>(HA-III+ or H-4 do not work with the EAPro-WMFT)           | ✓           |             |          |          |          |          |
| Humidity Sensor<br>HA-4<br>Range: 5 to 95% RH with ±3%<br>from 25 to 75% RH at 77 °F (25 °C)                    | ✓           |             | ✓        | ✓        | ✓        | ✓        |
| Supervised Water Surface Sensor<br>W-S-S  | ✓           | ✓           | ✓        | ✓        | ✓        | ✓        |
| 12V DC Power Adapter Kit<br>110V AC ~ 240V AC to 12V DC @ 1A max<br>Power Adapter Kit 12VDC-KIT (Medical rated) | ✓           | ✓           | ✓        |          | ✓        |          |
| Power-Out Alert™<br>PS-110<br>Power Outage Detector   | ✓           | ✓           |          |          |          |          |



# WINLAND™ ELECTRONICS, INC.

winland.com | 800.635.4269

